



FE Technology, Inc.

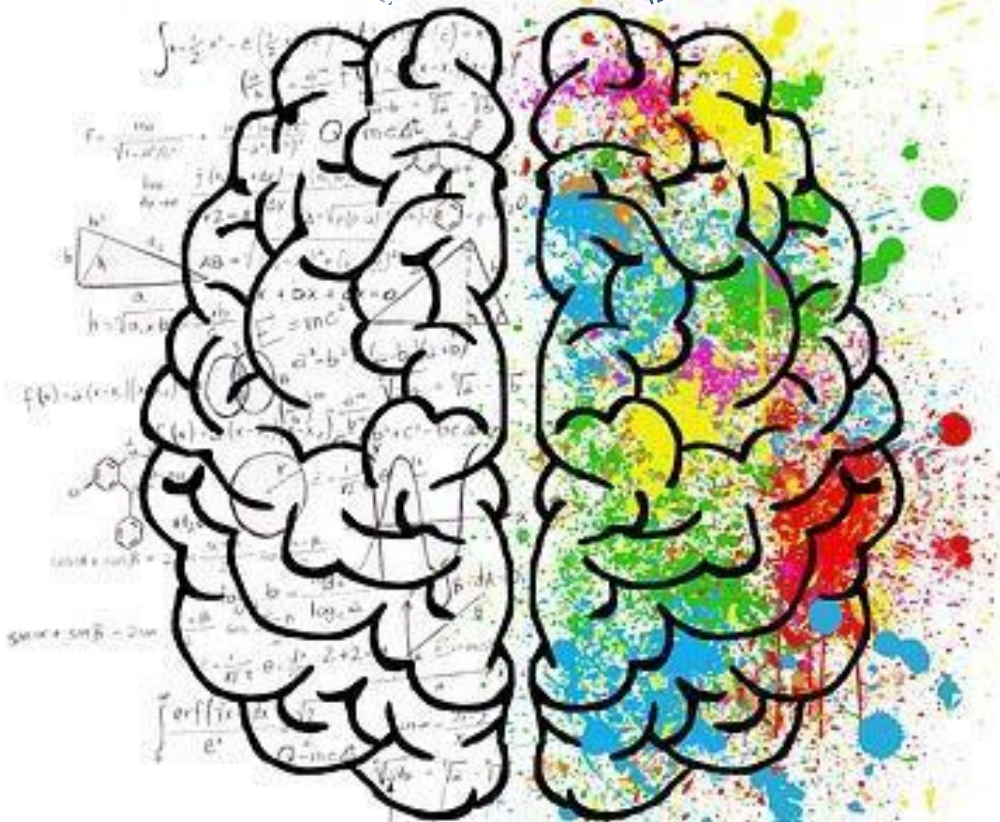
FE Technology, Inc.

-LuxSeeker, a Bluetooth
Low Energy Light Meter

Lux vs. CCT for the human brain

Lux CCT

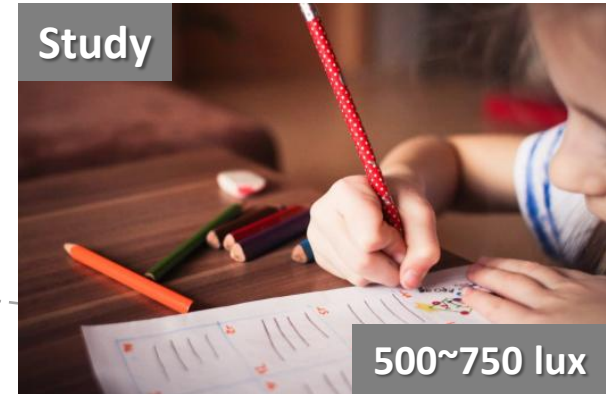
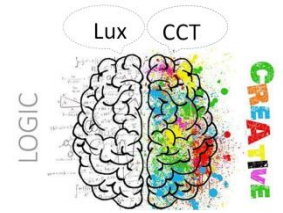
LOGIC



CREATIVE

Different categories of brightness

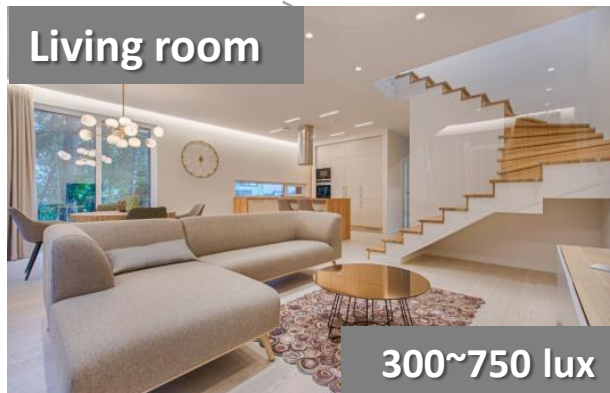
Ergonomics, as it relates to lighting, is having the right amount lighting for what you're doing. Different levels of lux can impact tasks being performed and the strain on our eyes.



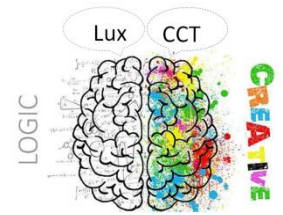
Full Daylight: 10,000 lux

Office/School: 300 lux
Reading: 500 lux

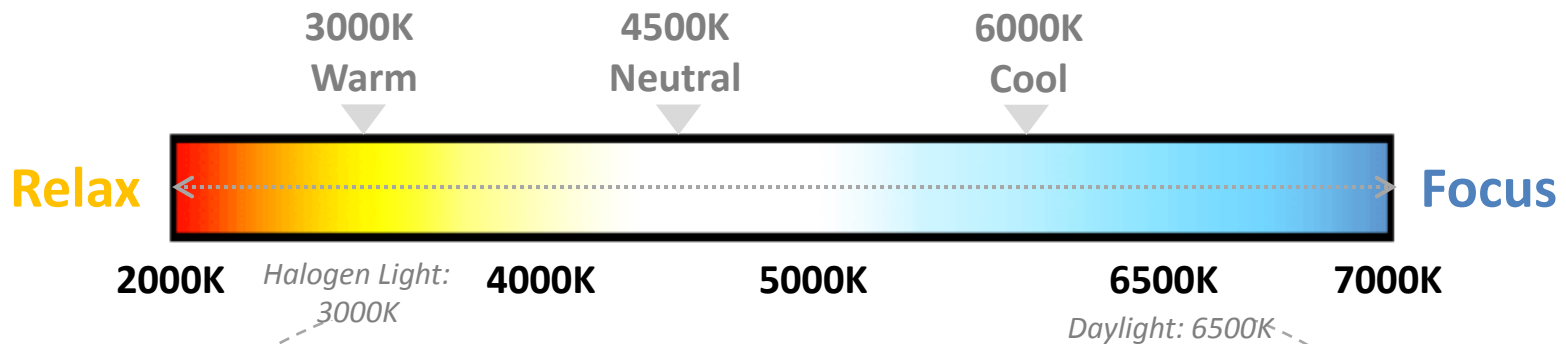
Illuminance (lux)



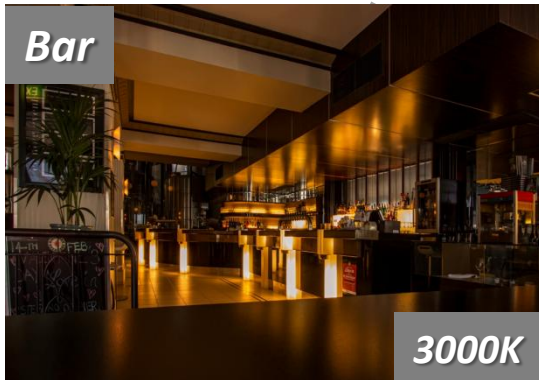
CCT measurements help you find the best fit for the comfort level you're looking for



CCT defines the color appearance of light. It can affect both your psychological and emotion state.



Color temperature (CCT)



Who uses a light meter?

Anyone can benefit from using the LuxSeeker light meter. By setting the Illuminance or Color Temperature, you can have the best lighting for whatever task is at hand

**Illuminance
(lux)**



**Color
Temperature
(CCT)**

Designer



Installer






End User



LuxSeeker – Specifications



Model Name	Lux Seeker – BLE Light Meter
Power input	Batteries or Micro USB
Connect	Bluetooth to your mobile device 
APP	Lux Seeker – BLE Light Meter  
Measuring range	Illuminance: 0 lux ~ 10,000 lux Color temperature: 2,000K ~ 7,000K
Accuracy	Illuminance: 5% Color temperature: 5%
Weight	40.8g (1.4 oz.)
Dimensions	72 x 72 x 24mm