



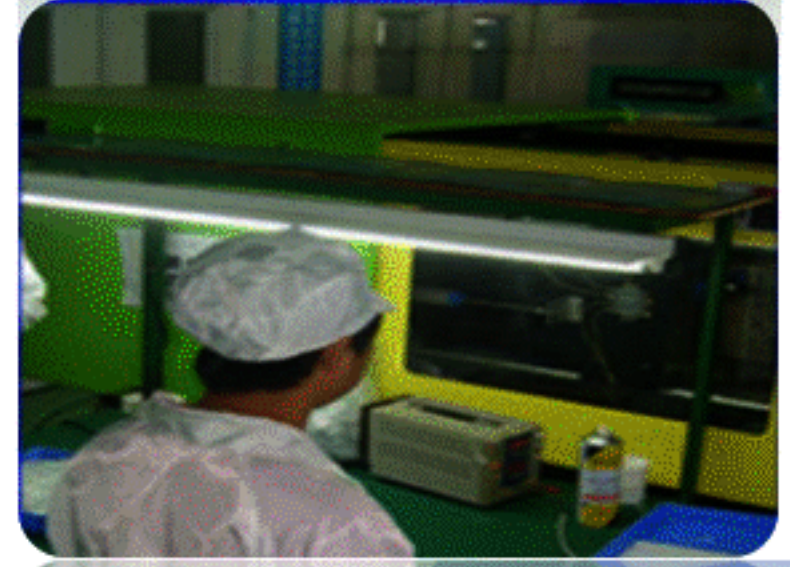
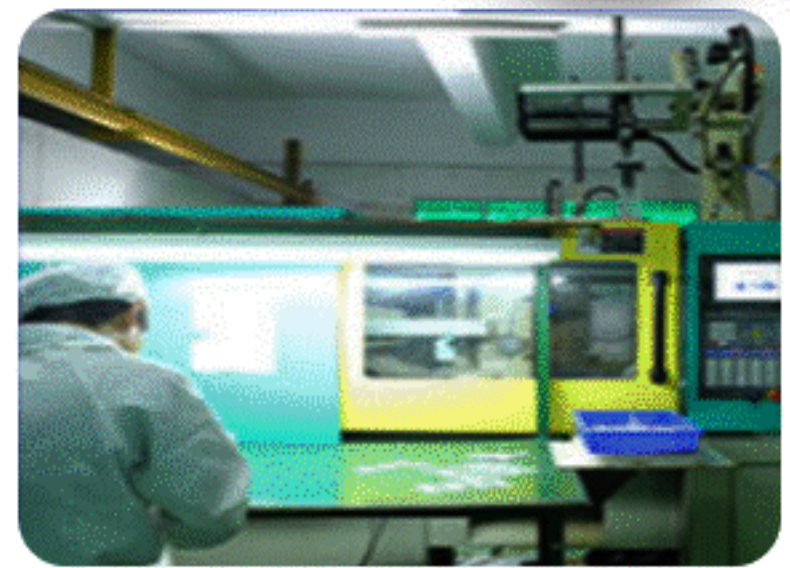
**FE** Technology, Inc.

# FE TECHNOLOGY, INC.

## LCD/LED Capabilites

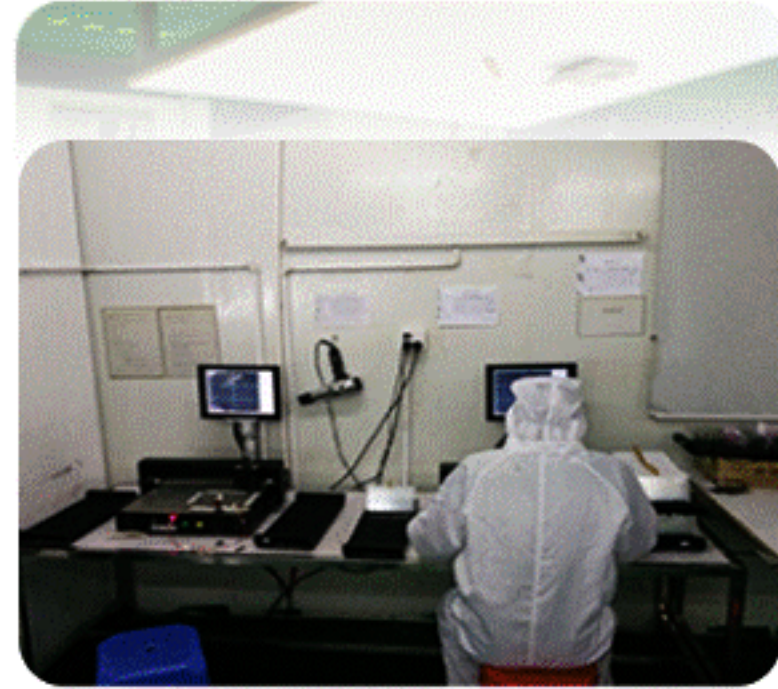
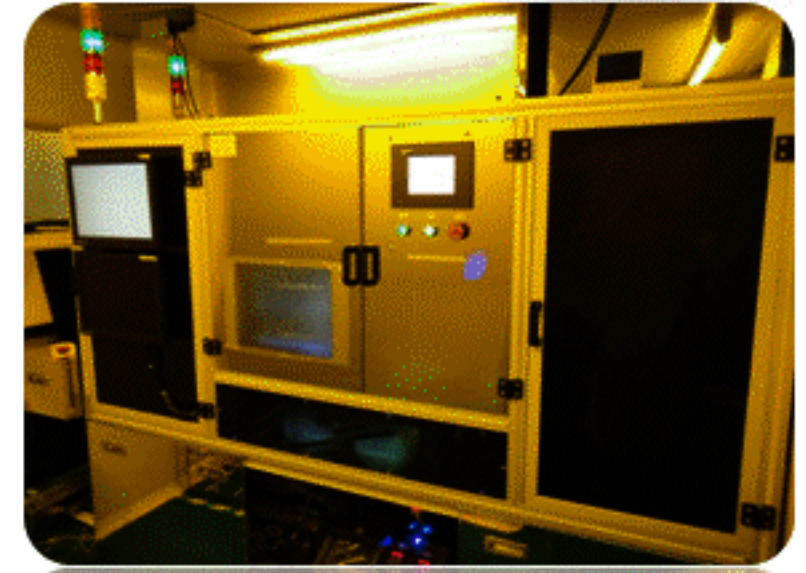


# Production Facility



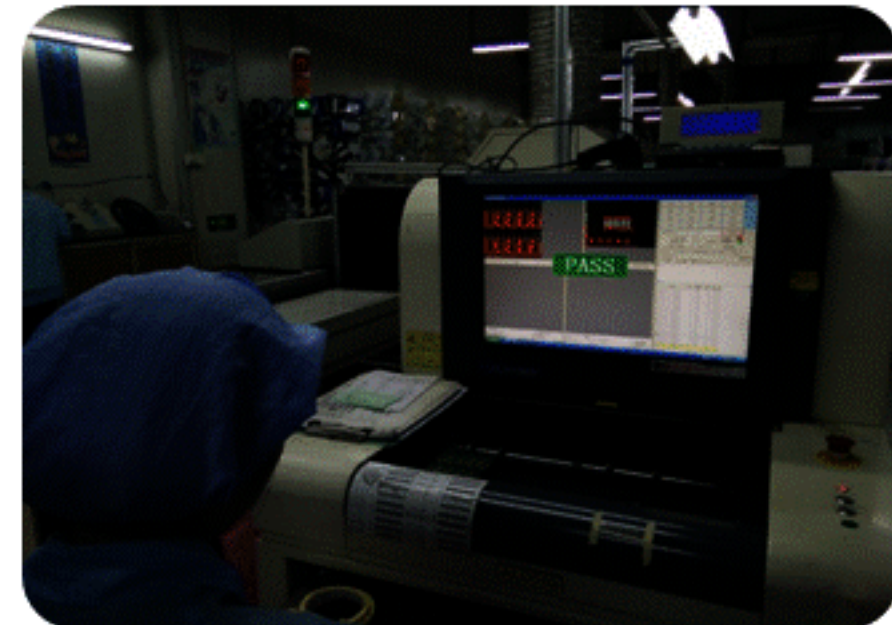


# Production Facility





# Production Facility





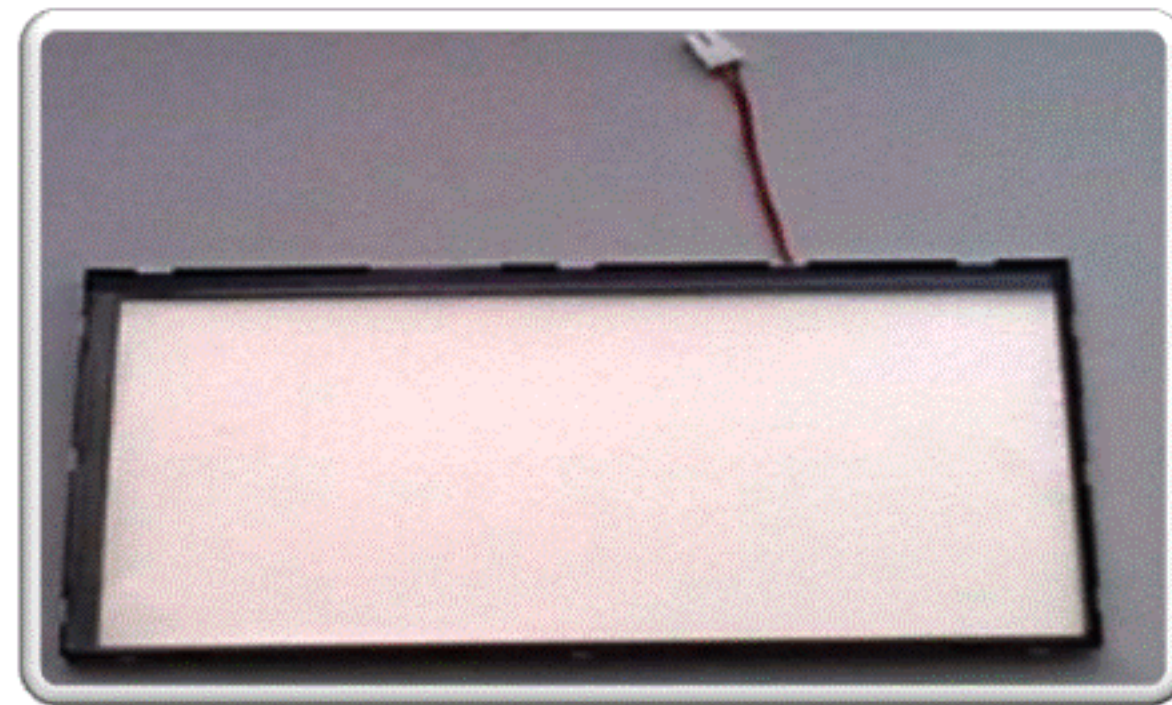
## LCD/LED Backlight Parameters



*Our LCD/LED backlight parameters can be customized per our customer's needs. We can work with you to adjust voltage, Luminous color (multi-color) and brightness, and dimensions of shape and thickness - all with long working life.*



**LED BACKLIGHT**



**LCD BACKLIGHT**



# TFT LCDs: Model Size



**TFT LCD Model - different sizes: 3.5" , 5.7" , 7.0"**



Size	Resolution	A.A. (mm)	Outline dimension (mm)	Touch panel
3.5"	320 x 240	70.08 x 53.56	77.8 x 64.5 x 3.0	
3.5"	320 x 240	70.08 x 53.56	77.8 x 64.5 x 3.0	V
5.7"	640 x 480	115.2 x 86.4	144.0 x 104.6 x 11.0	
5.7"	640 x 480	115.2 x 86.4	144.0 x 104.6 x 11.0	V
5.7"	320 x 240	115.2 x 86.4	144.0 x 104.6 x 12.8	
5.7"	320 x 240	115.2 x 86.4	144.0 x 104.6 x 12.8	V
5.7"	640 x 480	115.2 x 86.4	144.0 x 104.6 x 12.8	
5.7"	640 x 480	115.2 x 86.4	144.0 x 104.6 x 12.8	V
7.0"	800 x 480	152.4 x 91.44	165.0 x 104.0 x 12.8	
7.0"	800 x 480	152.4 x 91.44	165.0 x 104.0 x 12.8	V



# Character Type



**Display Format : 8x2 , 16x1 , 16x2 , 16x4 , 20x2 , 20x4 , 24x2 , 40x2 , 40x4**



Format	V.A. (mm)	Outline dimension (mm)
8 x 2	38.0 x 16.0	58.0 x 32.0 x 13.5
16 x 1	65.0 x 14.0	80.0 x 36.0 x 14.5
16 x 1	99.0 x 13.0	122.0 x 33.0 x 15.0
16 x 2	64.5 x 16.4	85.0 x 29.5 x 12.9
16 x 2	62.2 x 17.9	84.0 x 44.0 x 14.2
16 x 2	64.5 x 16.4	80.0 x 36.0 x 12.9
16 x 2	64.5 x 16.4	80.0 x 36.0 x 12.9
16 x 2	52.1 x 15.0	59.0 x 29.3.0 x 5.5
16 x 2	64.5 x 16.4	80.0 x 50.0 x 14.5

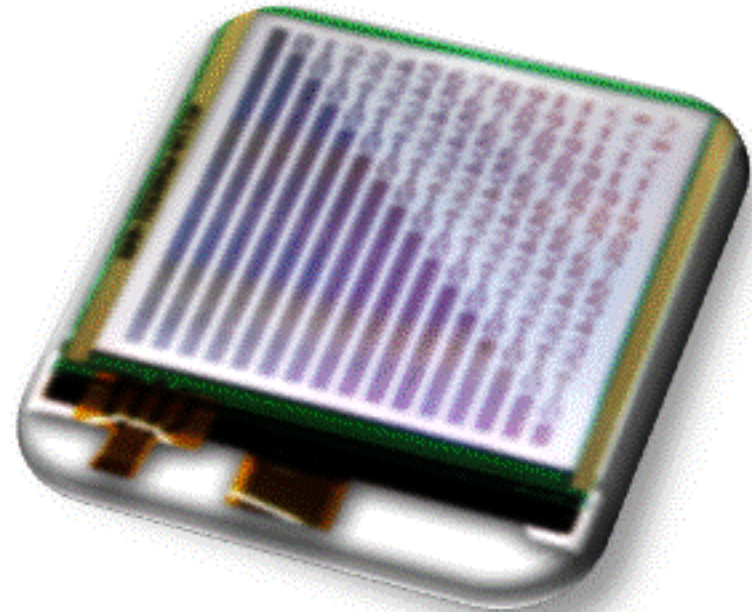
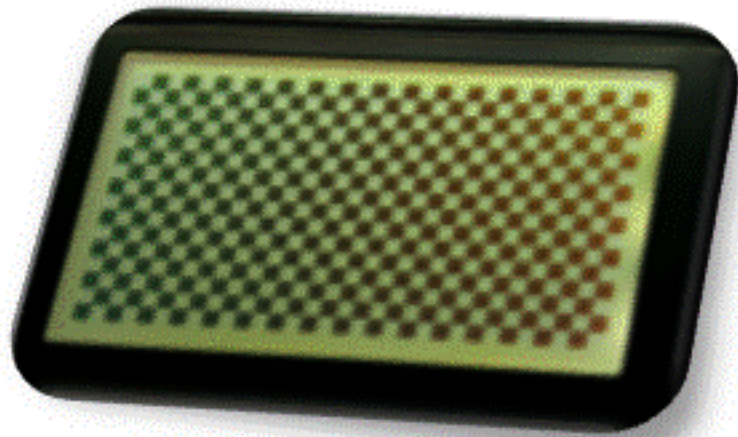
16 x 4	61.8 x 25.2	87.0 x 60.0 x 14.0
20 x 2	82.2 x 18.2	116.0 x 37.0 x 14.5
20 x 2	82.2 x 18.2	116.0 x 37.0 x 14.5
20 x 4	76.0 x 25.2	98.5 x 60.0 x 14.5
20 x 4	76.0 x 25.2	98.5 x 60.0 x 14.5
20 x 4	123.5 x 43.0	146.0 x 62.5 x 13.6
24 x 2	94.5 x 18.0	118.0 x 36.0 x 14.7
40 x 2	154.0 x 16.5	182.0 x 33.5 x 14.1
40 x 4	147.0 x 29.5	190.0 x 54.0 x 14



# Graphic Type



**Display resolution : 122x32, 128x64, 160x80, 160x160, 240x64, 240x128, 240x160, 320x240**



Resolution	V.A. (mm)	Outline dimension (mm)
122 x 32	60.5 x 18.5	80.0 x 36.0 x 15.0
122 x 32	52.0 x 15.0	59.0 x 29.3 x 5.5
128 x 64	71.7 x 39.0	93.0 x 70.0 x 13.5
128 x 64	60.0 x 32.5	75.0 x 52.7 x 9.00
128 x 64	60.5 x 18.5	80.0 x 36.0 x 15.0
128 x 64	62.0 x 44.0	78.0 x 70.0 x 12.4
128 x 64	71.7 x 39.0	93.0 x 70.0 x 14.5
160 x 80	72.3 x 37.8	100.0 x 54.0 x 15.3
160 x 80	72.3 x 37.8	100.0 x 54.0 x 15.3
160 x 80	72.3 x 37.8	100.0 x 54.0 x 15.3
160 x 160	62.0 x 62.0	89.2 x 85.0 x 14.50
160 x 160	62.0 x 62.0	89.2 x 85.0 x 14.50

240 x 64	132.0 x 39.0	180.0 x 65.0 x 16.1
240 x 64	132.0 x 39.0	180.0 x 65.0 x 16.1
240 x 128	114.0 x 64.0	144.0 x 104.0 x 14.1
240 x 160	61.6 x 42.5	74.6 x 54.1 x 4.0
240 x 160	61.6 x 42.5	79.6 x 62.9 x 18.5
320 x 240	122.0 x 92.0	72.3 x 92.2 x 9.1
320 x 240	122.0 x 92.0	167.1 x 109.0 x 11.0
320 x 240	122.0 x 92.0	167.1 x 109.0 x 11.0
320 x 240	122.0 x 92.0	167.1 x 109.0 x 11.0
320 x 240	122.0 x 92.0	167.1 x 109.0 x 11.0
320 x 240	122.0 x 92.0	167.1 x 109.0 x 11.0





# LCD Series



## TN Series :



TN Positive



TN Positive



TN Negative

## HTN Series :



HTN Positive



HTN Negative



HTN Blue Panel

## STN Series :



STN Yellow Green Panel



STN Blue Panel



STN Blue Panel

## FSTN Series :



FSTN Positive



FSTN Negative



FSTN Blue Panel



# LCD Product Types



*Treadmill screen*



*LCM Module*



*Calculator Screen*



*Temperature Controller Module*



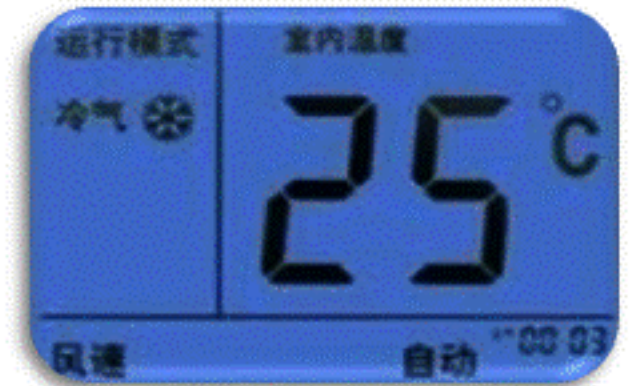
*Electric meter screen*



*LCD screen*



*Timer screen*



*Temperature Controller Screen*