

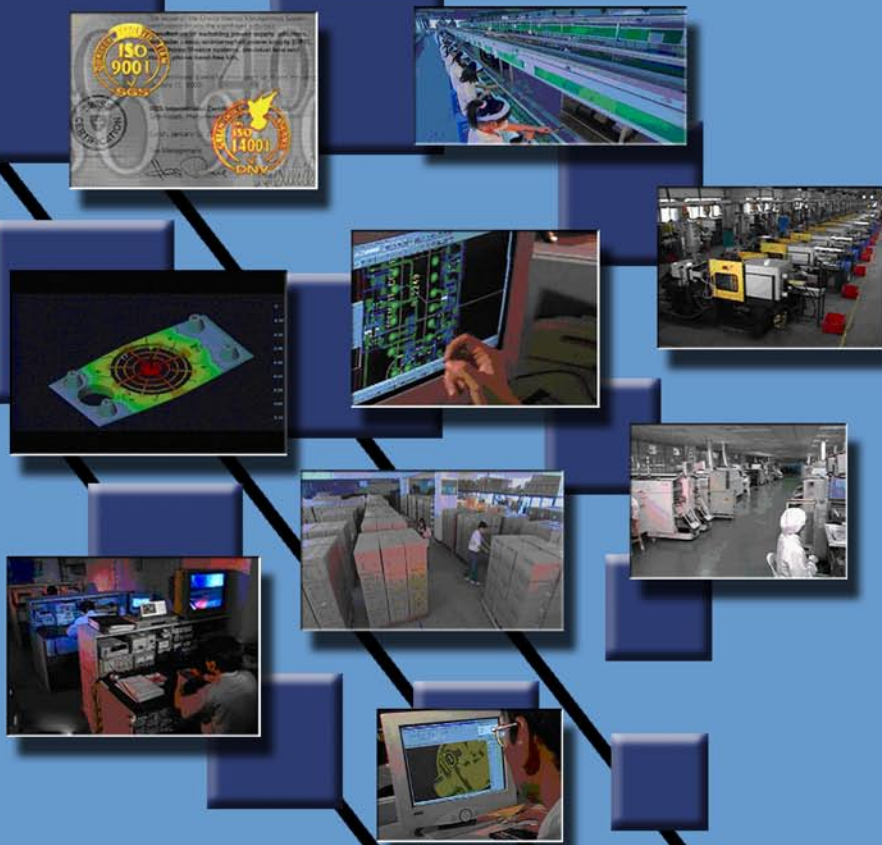


FE Technology Inc.

Manufacturing & Turnkey

**ELECTRONIC ASSEMBLY
MECHANICAL ASSEMBLY
TURNKEY PRODUCTION
HIGH VOLUME PRODUCTION**

*Design Evaluation
2D/3D Design
Custom Tooling
Graphic Design
Quality Control
Product Testing
JIT Scheduling*





FE Technology Inc.

OEM Manufacturing Specialists

YOUR MANUFACTURING AND DESIGN SPECIALIST

FE Technology provides services ranging from conceptual design to finished product. Our staff of engineers, CAD and graphics is available to assist you in taking your product to production. With our experience and dedication, we can insure that your product gets into production with a minimum of delay and into your hands as a truly quality product, per the schedule we mutually establish.

Due to our years of hands-on experience and clear communication with Far East factories, we are able to assist you in analyzing your design and transferring both your design and design goals to our factory staff. We are able to minimize any misunderstandings or clarify any complexities to insure that there is full and complete understanding between your staff and our factory staff. We can insure that your product and its application environment are fully understood so that its customer usage is not compromised by choice of materials, construction or component limitations.

For over 20 years, we have worked with OEM and ODM products, designed by or for customers across the USA. We have worked with long established Fortune 500 companies and new companies trying to get their first products into the marketplace. We have always met the design goals and the quality standards of our customer, no matter how stringent. Our policy is that we are the "manufacturing arm" of our customer and responsive to the needs of your company.

We provide state-of-the-art facilities and equipment that insure the ability to meet your spec tolerances. We have unsurpassed QA staffs that insure the on-going quality of your product. Our factories are ISO certified and our people are fully trained in the ISO standards that we are committed to. In short, we are a supplier of the highest quality, ready to meet or exceed your quality needs.

FE Technology is prepared to supply your product in the manner you designate and to the Quality Standards you establish.
We are your Manufacturing Resource.



Sales & Engineering
Phone: 937-898-9472
Fax: 937-898-9473

Corporate Headquarters
Phone: 925-803-1238
Fax: 925-803-1212





Far East Manufacturing

We have modern, state-of-the-art facilities located in Taiwan and China. Our capabilities include Engineering Design and Engineering Support; PCB Design and Manufacturing; Product Design and Development; Plastic Molding; Metal Stamping and Full Production for Turnkey Programs.



Shenzhen, China



Taipei, Taiwan

Our Engineering and Technical Staff are capable of Providing the highest level of Electronic, Electrical and Electro-Mechanical Design and Support. We use the latest CAD tools available. We can also build Test Fixtures to insure the quality of your product.



In Plant Tooling House

We continually train our staff in the Quality Goals and Techniques required to meet our high standards for Quality and Product Reliability. We have an ongoing Training Program for our Quality Staff and our Production Staff.



Obtained ISO 9001 Certificate
QS 9000 Qualification is anticipated

The backbone of our Quality Program is based on the International Standards of ISO. We are certified to both ISO 9001 and QS 9000.



Printed Circuit Boards Design, Fabrication, & Assembly

DESIGN EVALUATION

- FE Technology will review your Gerber Files, mechanical data and a sample of your PCB assembly to optimize the manufacturability of your product.
- We will offer cost savings opportunities through the use of Far East local, equivalent parts where direct crosses can be found.
- We will evaluate mechanical parts on a “build or buy” basis, for further cost savings and quality assurance.

PCB DESIGN

- FE Technology can take circuit schematics and do the PCB layout when required.
- We can make PCB circuit modifications when required for parts changes or modifications.
- We can minimize time lost when running changes are required.

PCB PRE-PRODUCTION SAMPLING

- FE Technology will provide initial PCB samples for customer verification and approval.
- We will then provide a fully loaded PCB Assembly for customer testing, verification and approval before going to production.

PRODUCTION CAPABILITY

- FE Technology has high quality, state-of-the-art SMT and Thru Hole production equipment.
- We can also offer the highest quality hand inserted or mechanical parts with our highly trained and quality conscious production staff.

QUALITY CONTROL

- FE Technology has ISO certified factories.
- Our QC and QA staff is highly trained to meet the high quality standards our factory demands and our customers require and expect.

TESTING

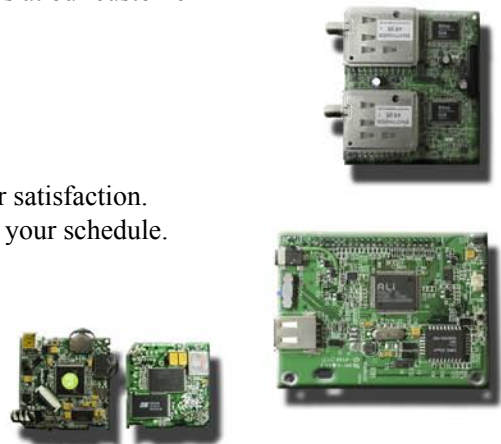
- FE Technology will 100% test your PCB Assembly after production.
- We can use a customer supplied Go-No Go tester when available.
- We can build a “bed of nails” tester to check against a customer supplied computer program or other customer supplied interface device.
- We will insure 100% quality.

PACKAGING AND SHIPPING

- FE Technology will bag or box your device to protect it against EMI.
- We will package in the best manner possible to insure that the product arrives at our customer in the same condition as it left our factory.
- We can offer Sea or Air shipment.
- We can offer Factory Direct or JIT shipment to our customer.

CUSTOMER SATISFACTION

- FE Technology has a long history of first rate customer service and customer satisfaction.
- We will follow every detail of your program and advise of any deviations in your schedule.
- We will transmit and resolve any production or quality issues as they arise.
- We are your “production arm” and we will perform as an extension of your company and be available when you need us to be available and perform as you wish us to perform.





Printed Circuit Boards

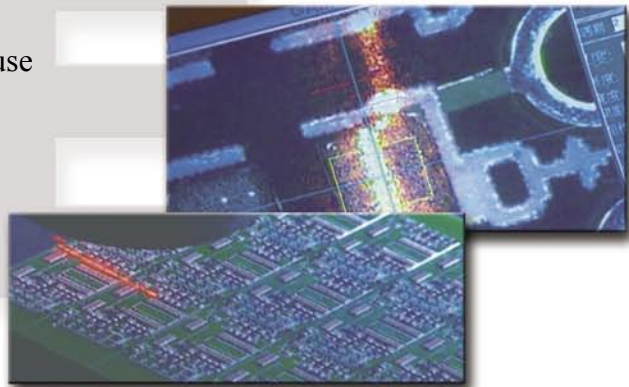


Pictured is one of our state-of-the-art SMT Production areas. We also employ “clean room” conditions for this area and maintain the highest level of cleanliness and QC supervision at each step of the process.



Pictured is the operation of one of our SMT Placement Machines.

In order to insure the quality of the SMT Process, we use state-of-the-art Optical Scanning in addition to Visual Inspection. We use every means possible to insure the quality of the product before it gets to Final Testing, where Bed of Nails Testing is used.



We utilize our highly trained Production Staff to do the Hand Assembly for parts that cannot be automatically placed. Visual Inspection is performed before each PCB is sent to Wave Solder.

After Electrical or Functional Testing, each PCB is visually inspected by our Final QC Group to insure the highest quality, before the products are packaged and shipped to our customer.

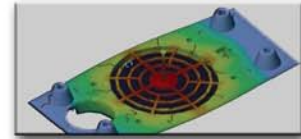
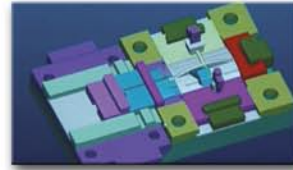




OEM / ODM Turnkey Design

YOUR MANUFACTURING SOURCE

- Electronic Assembly
- Electro-mechanical Assembly
- Complete Product
- From Design to Shelf Ready



DESIGN INFORMATION

- Customer supply a Sample or Prototype of the Product..
- Customer supply 2D or 3D CAD design.
- Customer supply PCB Gerber Files for a Product which requires a PCB.
- Customer supply Function or Operational Description of the Product.
- Customer supply Operating Environment information for the Product.
- Customer supply any Special Design considerations.

DESIGN EVALUATION AND QUOTATION

- FE Technology and the Factory Engineers will review all details of the Program.
- All parts of the Product will be reviewed on a “build or buy” basis.
- All components will be reviewed for consideration of Far East local equivalents.
- Plastic and Metal parts will be evaluated on optimum manufacturability, cost and performance.
- Tooling for Plastic Molds and Metal Stamping and Forming Dies will be identified.
- Suggestions will be made for Product Improvement or Manufacturability considerations.
- A Quote will be prepared, including piece price, tooling and fixtures.

DESIGN CONFIRMATION

- FE Technology can provide 3D CAD pictures to confirm details of the Tooled Design.
- We will review all details of the design with the customer to insure full approval.
- We will supply information on any improvements suggested by the factory Design Engineers.
- We will request “formal acceptance of the design” before going to Tooling.

TOOLING

- The factory will proceed with all Plastic Molds and Stamping and Forming Dies.
- PCB design information will be used to build PCB Prototypes.
- Normal lead time can range from 45 to 90 days, depending on the design complexity.

PRE-PRODUCTION APPROVAL SAMPLES

- A completely tooled, plastic and metal, prototype will be submitted to the customer for design review confirmation and approval.
- The Bare PCB will be submitted to the customer to review, confirm and approve.
- Once the Bare PCB is approved, a fully assembled PCB will be submitted for final approval.
- Any modifications or changes requested by the customer will be implemented and re-submitted to the customer for “Final Production Approval”.



ARTWORK AND GRAPHICS

- FE Technology’s graphics group has the capability to assist in the layout and confirmation of all customer supplied Artwork
- We can make minor modifications when required to meet the final printing layout.
- We can do simple one color or multi color graphic printing.





OEM / ODM Turnkey Production

PRODUCTION

- After full approval from the customer, the factory will initiate orders for “outside purchased parts and materials” and initiate the production process.
- All Production Procedures will be prepared by the Production Engineering department for each level of the assembly and any sub-assembly.
 - All Production Fixtures will be prepared for the production line.
- All QC and QA Procedures for this Product and its various parts will be prepared by our QC and QA departments.
- All Inspection and Test Fixtures will be prepared for the QC of this Product.

TESTING

- Our testing covers the product through the entire process:
 - “Outside purchased parts or material” coming into the factory.
 - On the Production Line.
 - After Production.

QUALITY CONTROL

- All of our factories are ISO certified.
- All of our QA and QC functions are well documented and fully implemented.
- Incoming Inspection (IQC) inspects all outside purchased materials to insure that they meet the specs assigned to each item.
- Production Line Inspection (IPQC) inspects the various parts and assemblies during the production process.
- Final QC (FQC) inspects the final product at the end of the final assembly process. This insures the function and appearance of the product before it is packaged.
- Quality Assurance (QA) inspects the various subassemblies and the final product to insure that it meets all aspects of the specifications for this product.

PACKAGING AND SHIPPING

- FE Technology will offer advice on method of packaging to minimize damage while the product is in transit.
- We can design “Polystyrene Molded Inserts” which will protect your product during handling and insure that your product arrives at your customer in the same condition as it leaves the factory.
- We can do “specialized packaging” or “molded cases for your product”, based on your design.
- Each and every product will be shipped in Master Cartons to minimize damage to any printing or graphics on our “customer ready box”.
- Your shipment can be transported via Air or Sea and be shipped direct to your location or to one of our warehouses for JIT delivery.

SERVICE

- FE Technology is ready to service your Design and Production needs.
- Our years of experience have prepared us to assist you in each and every of the design, development and production of your product.
- Our quality approach to and execution of your Product Design is our mission.
- We minimize the difficulties of going from design to production because of our years of successful Turnkey Production Management.





FE Technology Inc.

Ready to serve OEM Customers throughout the USA. We are the choice of many large and small OEM factories.

EXPERIENCE: *20 years serving the USA market*

RESPONSIVE: *We can review and respond to your specs, sometimes overnight. We can expedite manufacturing and shipment of your products.*

QUALITY: *With our highly trained factory staff and local QC and QA, we doubly insure the quality of the product you receive.*

SERVICE: *In today's market, service distinguishes the supplier who is truly an extension of your Engineering, Purchasing and Production departments. Our goal is to be an integral part of your organization and be considered an "external, but connected, function" of your company.*

OTHER PRODUCTS FROM FE TECHNOLOGY

POWER ADAPTERS	AC/DC AC/AC Switching
POWER SUPPLIES	Desk Top Wall Mount Open Frame
BATTERY CHARGERS	Non Regulated Smart Chargers
DC/DC POWER	Cigarette Lighter Style
TRANSFORMERS	Lam & Ferrite Power Coils Chokes Inductors
CUSTOM OEM CABLES	Molded Assembled OBD USB 1394
CUSTOM HARNESSSES	Built to customer specifications
CUSTOM KEYPADS	Molded Rubber Membrane
ANTENNAS	Molded Rubber Steel Mobile
TELCO PRODUCTS	Jacks Cords CAT5 CAT6

Sales & Engineering

Phone: 937-898-9472

Corporate Headquarters

Phone: 925-803-1238

sales@fe-tech.com

Fax: 937-898-9473

Fax: 925-803-1212